

This instruction sheet provides installation advice for the following versions of the FUENTE drinking fountain:

- 0310054 FUENTE CIRCOLARE drinking fountain (round-shaped body)
- 0310064 FUENTE RETTANGOLARE drinking fountain (rectangular-shaped body)
- 0310074 FUENTE ELLITTICA drinking fountain (elliptical-shaped body)

- 0310065 Cor-Ten steel FUENTE-R CORTEN drinking fountain (rectangular-shaped body)
- 0310075 Cor-Ten steel FUENTE-E CORTEN drinking fountain (elliptical-shaped body)

- 0310050 Stainless steel FUENTE CIRCOLARE drinking fountain (round-shaped body)
- 0310060 Stainless steel FUENTE RETTANGOLARE drinking fountain (rectangular-shaped body)
- 0310070 Stainless steel FUENTE ELLITTICA drinking fountain (elliptical-shaped body)

All versions listed above are supplied fully assembled.

INSTALLATION INSTRUCTIONS



Additional equipment needed:

- **quick-setting cement**
- **any necessary pipe fittings**

1. Check in Fig. 1 which of the two pipes located in the bottom of the fountain must be connected to the drain pipe and which one must be connected to the water supply pipe.

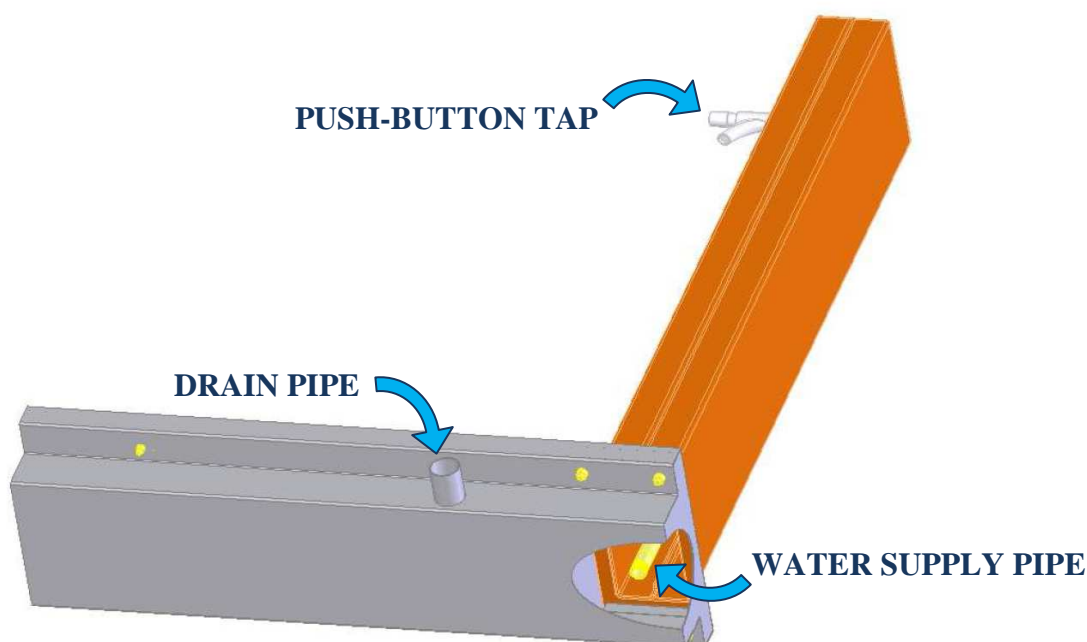


Fig. 1

INSTALLATION INSTRUCTIONS

FUENTE DRINKING FOUNTAIN

2. Provide the installation site with a $\varnothing 1/2''$ water supply pipe and with a $\varnothing 40$ mm drain pipe (Fig. 2).



Fig. 2

3. Set the fountain in position and make sure that the fountain grid is flush with ground level (Fig. 3).

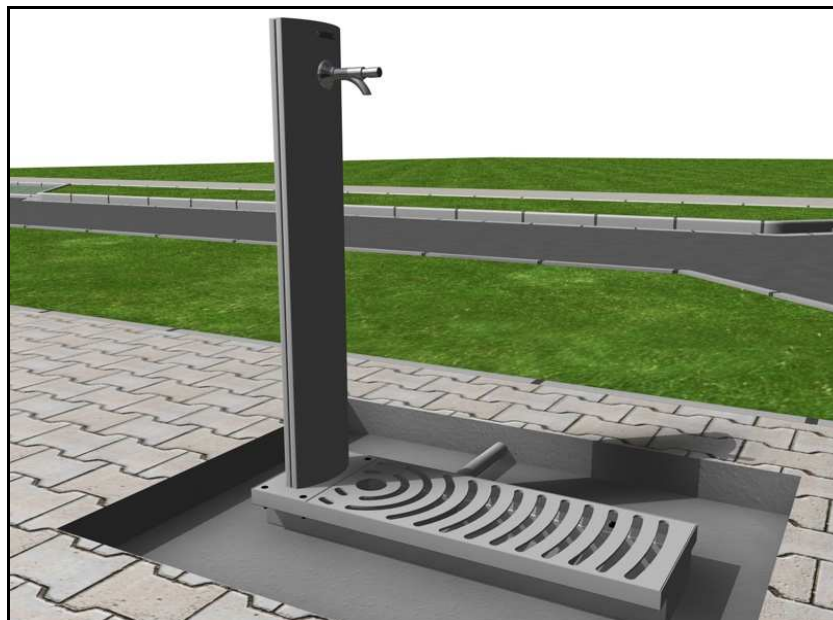


Fig. 3

4. Connect the water supply pipe and the drain pipe (Fig. 4).

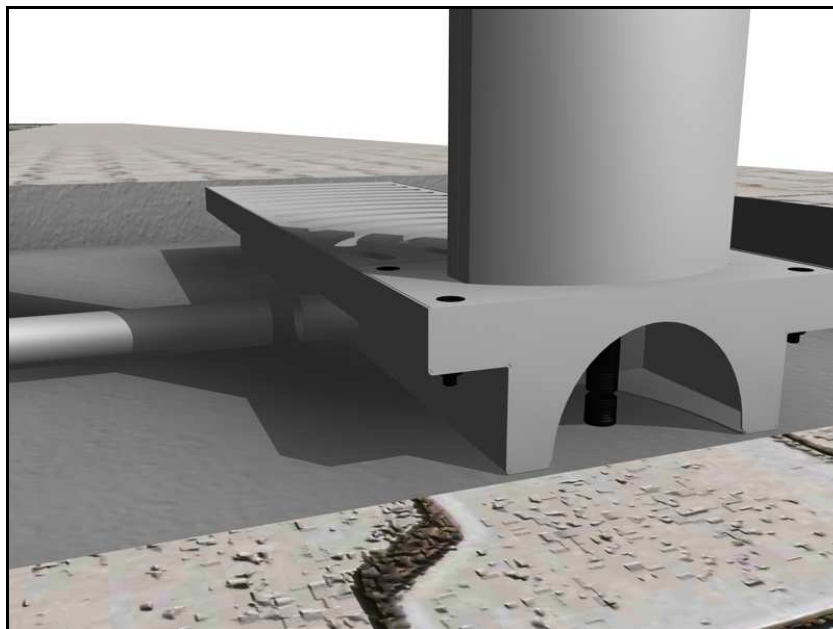


Fig. 4

5. Pour the cement and make sure that the fountain grid and the cement surface are flush with ground level, as shown in Fig. 5.



Fig. 5

6. Leave the cement to set and to harden.